

final cut facility at Ealing film studios

- Online & Offline Editing
- HD Grade
- FCP 6
- Effects & Broadcast Design
- Offsite Edit suite
- Fast Raid Storage

Latest at widei

Early this year we were in the process of moving offices. A lot has happened since then... we've been busy with building an environment where we can provide more space needed for all our producers and editors to be as creative as they want to be.

We now also have Kona and Deck link support, both of which can support full HD and handling of 2k Di's! So whether you are coming from SD, HD, HDv, HD 4.4.2, HD 4.4.4 or HD SR, we are confident with all formats to bring you the best post solution suited to your creative needs.



WIDEi Films is currently in the process of cutting **High Stakes**. This fast paced, plot twisting, thrilling and grittily realistic vampire film was shot on HD on location in South Wales.

We are also associate producers on the up and coming film called ISCA. This surrealistic feature from BAFTA nominated Director Ray Kilby (*Never Play with the Dead*) plays off in a Welsh University town, where a gifted student's research unleashes evil forces from an ancient world.



This year **WIDEi Films** goes to show! For the very first time we will have a presence at the Broadcast Live Show.

This is a 3-day exhibition, which will provide you with all the essential knowledge and technology you need to make it in TV.

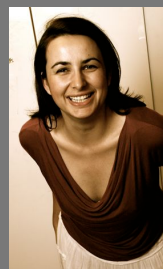
And in succeeding you can start by visiting us at the Blueberry stand (C30) where we will be showcasing some of our work. Come meet us and if you are an old friend, come say hi.

Team



Email-T

Taimur: has been missing in action. Recently returned from Jordan where he has been working on the 2nd season of Mish Shab Aflam for Royal Film Commission of Jordan and overseeing the revamp of graphics for the last few months. To all of our delight, he has returned to Fred & Ginger, High Stakes and Broadcast Live commitments to mention a few. He'll be running on adrenaline from end of June grading Adrenaline Junkie – Jack Osbourne series.



Email-J

Janine: when she is not giving massages to editors, handles everything from getting the best on edit suites and finding the best talent for your project. She also looks after everything Taimur does, so if you haven't found Taimur, please call her...any takers?



Will: do attitude is what we encourage at WIDEi Films. From digitising to checking equipment in, Will will do what needs doing

Post at widei

- 1 x FCP suite with Deck Link HD, 2k Di
- 1 x FCP suite with Kona supporting up to HD-SR
- 1 x FCP suite for offsite with HD I/O and raid drives
- Final Cut Pro 5 & 6 installed with Sapphire, Magic Bullit and many other plugins.
- After Effects, Color, DVD Studio Pro and many other applications.
- We have more then 5 TB of Raid protected storage.

Shoot at widei

- Sony Z1 and A1 cameras with wide-angle lenses, Radio Mic's, Boom Mics, Field Monitors
- Lighting: Kino Flo, Dado kits
- RedRock lense adapter with 35mm Lense Kit with 15, 24, 28, 35, 135, 75-300 mm Lenses and mount for Sony z1, Panasonic or any DV camcorder.
- Follow Focus kit and shoulder Mount kit. All this comes in Peli cases or soft bags.

Learn at widei

- We provide one-on-one Final Cut Pro training, bespoke courses for individuals, groups and organisations.

Sponsored by



Representing established editors, designers, animators and directors, we assist Production Managers, Producers and Directors to find the best match of creative talent to their projects. Proactive and attentive, we provide fast and accurate solutions that resonate.

The talent on board a creative project is your finest asset, and we want to introduce you to those who will make it a success. People are our greatest resource.

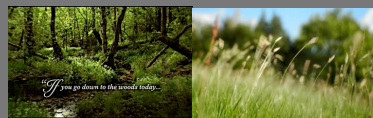
Based in Ealing Film Studios since 2001, clients Blueberry regularly work with include: BBC, CNN, IWC, Bloomberg, RDF, Talkback Thames, The Edge Picture Co, Mentorn, Darlow Smithson, UNIT, Wall to Wall and Flaming CGI.

widei FILMS LTD.

T 0871 855 2790 - F 07092 218 009

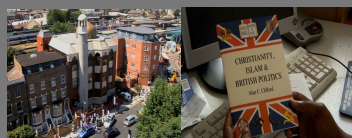
Ealing Films Studios, Ealing, London W5 5EP

Recent at widei



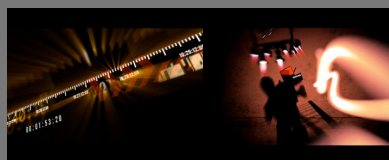
Snare Campaign

Award winning Viral and Cinema Campaign Offline, Online, Graded and Sound design done at **WIDEi Films**.



Them and US

The notorious Finsbury Park mosque is attempting to move on from its murky past. Offline done on Avid, but online and grade on Final Cut Pro.



Mish Shab Aflam

After last years success **WIDEi Films** has been commissioned with revamping the graphics for this flag ship show for the Royal Film Commission of Jordan.